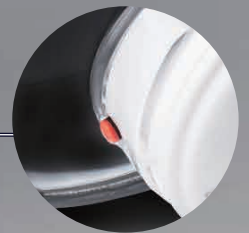


Widest Polycarbonate
3D-curve Visor
(Inside:Anti-fog Coated)
(Outside:Anti-scratch)
Coated
EN 166 1B

Durable NR 6-point
Head Harness

Designed to use with
a Safety Helmet and
Coveralls

More Safety!



Twist Lock Connector
Filter Lock Application
(Only CP-P3R)

Speech Diaphragm

Upgraded to EN136:1998 Class 2!

Particle Filter **CP-P3R**

More Wide Vision!



EN 143:2000+A1:2006
AS/NZS 1716:2012



Back Side of CP-P3R Filter

The off-set connector
supports the wide
vision(Only CP-P3R).

FS01

EN 136:1998 Class 2

AS/NZS 1716:2012

Made in Japan

With 100 years of research development experience and "Made in Japan" quality, SHIGEMATSU WORKS CO., LTD.(STS) is the brand you can trust.

Business Line

Manufacture and sales of Personal Protective Equipment, Respiratory Protective Device, and other equipment for emergency escape, fire fighting and rescue operation, etc.

SHIGEMATSU WORKS CO., LTD.
www.sts-japan.com

Direct Phone : +81-3-6903-7529

SINCE 1917
Safety Style
with